

How to Quickly License a Few Records



Decide with Confidence

There may be times when you want to license a particular record or a group of records.

Below are the steps to license selected record(s):

Step 1: Make your selection

The screenshot shows a software window titled "New Selection 1" containing a "Data Grid" for "Sample Customer Data". The grid has four columns: "Duns Number", "Business Name", "Physical City", and "Physical State". All 12 rows are highlighted in yellow, indicating they are selected. Below the grid, a status bar reads "Browsing all selected Sample Customer Data; No Limit; Selected: 12 Sampl...". At the bottom, a "Selection" tab is active, and a button labeled "12 Sample Customer Data" is visible.

Duns Number	Business Name	Physical City	Physical State
001802511	Mercedes-Benz U...	Montvale	NJ
118184030	Mercedes-Benz U...	Montvale	NJ
878120120	Daimler Benz Pur...	Montvale	NJ
008919813	Panasonic Corpor...	Secaucus	NJ
001818012	Sharp Electronics...	Mahwah	NJ
001707322	Konica Minolta B...	Ramsey	NJ
070094818	Lg Electronics U...	Englewood Clif...	NJ
931111876	Celco Partnership	Morristown	NJ
012063822	BMW of North Am...	Woodcliff Lake	NJ
611429481	Software House L...	Piscataway	NJ
011658242	GE Healthcare Bi...	Piscataway	NJ
078269164	Chelco Group	Avenel	NJ



Step 2: Select the record or records you wish to license.

To click on one record, click on the record you want to license.

Drag a column header here to group by that column.

Duns Number	Business Name	Physical City	Physical State
001802511	Mercedes-Benz U...	Montvale	NJ
118184030	Mercedes-Benz U...	Montvale	NJ
878120120	Daimler Benz Pur...	Montvale	NJ
008919813	Panasonic Corpor...	Secaucus	NJ
001818012	Sharp Electronics...	Mahwah	NJ
001707322	Konica Minolta B...	Ramsey	NJ
070094818	Lg Electronics U...	Englewood Clif...	NJ
931111876	Celco Partnership	Morristown	NJ
012063822	BMW of North Am...	Woodcliff Lake	NJ
611429481	Software House L...	Piscataway	NJ
011658242	GE Healthcare Bi...	Piscataway	NJ
078269164	Chelco Group	Avenel	NJ

Browsing all selected Sample Customer Data; No Limit; Selected: 12 Sampl...

Cover | Selection | Data Grid * | 12 Sample Customer Data



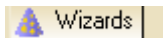
If you wish to click on several records, hold your control button down and click on the records you wish to license.

The screenshot shows a software window titled "New Selection 1" containing a "Data Grid" with the data "Sample Customer Data". The grid has four columns: "Duns Number", "Business Name", "Physical City", and "Physical State". There are 12 rows of data, all of which are highlighted in yellow, indicating they are selected. Below the grid, a status bar reads "Browsing all selected Sample Customer Data; No Limit; Selected: 12 Sampl...". At the bottom of the window, there are tabs for "Cover", "Selection", and "Data Grid *", with a button labeled "12 Sample Customer Data" to the right.

Duns Number	Business Name	Physical City	Physical State
001802511	Mercedes-Benz U...	Montvale	NJ
118184030	Mercedes-Benz U...	Montvale	NJ
878120120	Daimler Benz Pur...	Montvale	NJ
008919813	Panasonic Corpor...	Secaucus	NJ
001818012	Sharp Electronics...	Mahwah	NJ
001707322	Konica Minolta B...	Ramsey	NJ
070094818	Lg Electronics U...	Englewood Clif...	NJ
931111876	Cellco Partnership	Morristown	NJ
012063822	BMW of North Am...	Woodcliff Lake	NJ
611429481	Software House L...	Piscataway	NJ
011658242	GE Healthcare Bi...	Piscataway	NJ
078269164	Chelco Group	Avenel	NJ



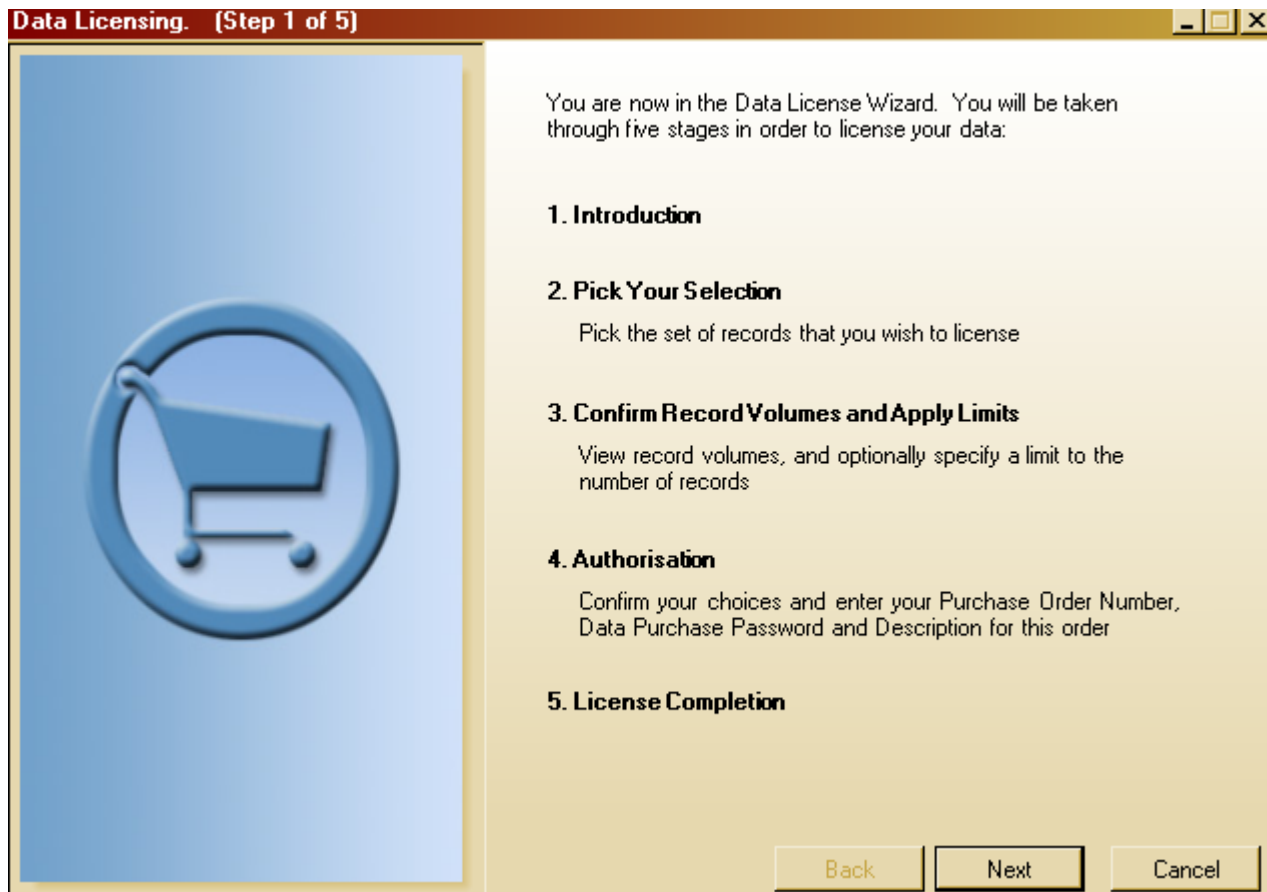
Step 3: Click on your wizard tab on the right side of your screen.



You will now be able to see the Purchase Wizards.



Step 4: Drag your highlighted record(s) onto Data Licensing and you will see the following screen:



Now continue as you normally would to license your records.